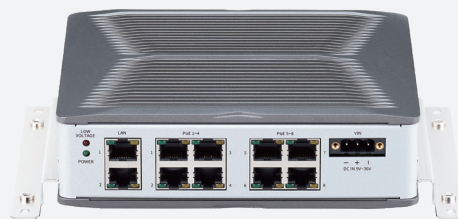




VES 31-4S



VES 31-8S

## Main Features

- 4/8 x IEEE 802.3af/at-compliant Gigabit Ethernet ports, 120W
- 4/8 PoE+ standard + 2 x Gigabit Ethernet ports
- Low battery voltage protection
- Jumbo frame support (up to 9216 Bytes)
- CE/FCC/UKCA/E13 mark certification
- Wide power input range 9~36VDC
- -40~70°C operating temperature
- Ignition power on/off support
- Power on/off delay time setting

## Product Overview

VES 31-4S/VES 31-8S unmanaged mobile PoE switch is designed for telematics applications in harsh environments with fanless enclosure. It provides 6/10 Giga bit Fast Ethernet ports including 4/8 IEEE 802.3af/at compliance PoE+ ports to transfer large amounts of video streaming, voice and critical data across Ethernet network smoothly and quickly.

As the power source from a vehicle is unstable by nature, the mobile PoE switches support a wide voltage input range of 9VDC to 36VDC and provide smart power management with low battery voltage protection, power-on and power-off delay timer, and auto ignition power on/off functions. These unique features can secure reliable operation and prevent premature failure of both the PoE switches and vehicle.

VES 31-4S/VES 31-8S are encased in a fanless dustproof enclosure and can operate under shock, vibration, and temperature extremes from -40 to 70°C. The mobile PoE switches are also small in size and support optional din rail mounting for ease of installation with PD devices such as IP cameras and Wi-Fi access points.

## Specifications

### Architecture

- Switch architecture. highly integrated, unmanaged-smart gigabit, store and forward switch
- 2K entry MAC address table with 4-way hash algorithm

### Power over Ethernet

- PoE standard IEEE 802.3af/at power over Ethernet/PSE
- PoE power supply type end-span
- PoE power output per port 54V DC, 550mA. max. 30 watts

### Network Connector

- 4/8-port RJ45 for 10/100/1000 base-T. PoE IEEE 802.3af/at compliance, total 120W
- 2-port RJ45 for 10/100/1000 base-T

### Standard Compliance

- IEEE 802.3 for 10BaseT Ethernet
- IEEE 802.3u for 100BaseT(X) Fast Ethernet
- IEEE 802.3ab for 1000BaseT(X) Gigabit Ethernet
- IEEE 802.3x for flow control
- IEEE 802.3af/at Power Over Ethernet

### I/O Interface

- Power: 9~36VDC input with ignition
- Ethernet
  - 4/8 x RJ45 10/100/1000 Mbps PoE port, 802.3af/at compliance
  - 2 x RJ45 10/100/1000 Mbps
- LED
  - 1 x power indicator
  - (RJ45 for PoE) 4/8 x PoE indicator+4/8 x Link/Active indicator
  - (RJ45 for LAN) 2 x Link indicator+2 x Active indicator
  - 1 x low voltage protection indicator

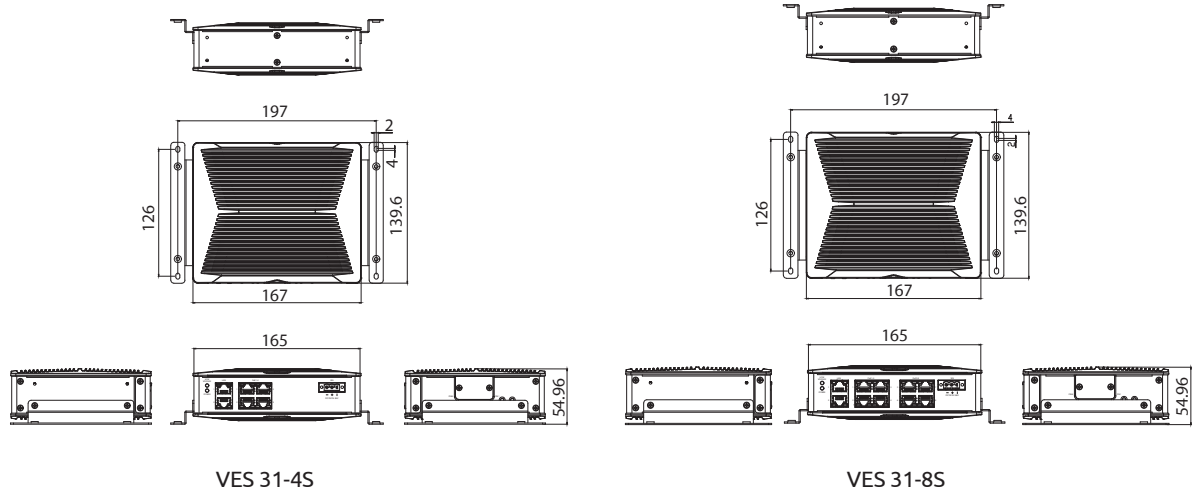
### Power Management

- Selectable boot-up & shut-down voltage for low power protection by DIP switch
- Power on/off delay time setting by DIP switch

### Dimensions

- 211 x 55 x 140 mm (83" x 21.65" x 55.1") with wall mount bracket
- Weight: 1kg
- Support horizontal mounting, DIN- Rail mounting (option)

## Dimension Drawing



### Environment

- Operating temperatures: -40°C to 70°C with air flow
- Storage temperatures: -40°C to 85°C
- Relative humidity: 10% to 90% (non-condensing)
- Vibration (random): 2g@5~500 Hz
- Vibration:
  - Operating: MIL-STD-810H, Method 514.8C Procedure 1, Category 4, common carrier US highway truck vibration exposure
  - Storage: MIL-STD-810H, Method 514.8E Procedure 1, Category 24
- Shock:
  - Operating: MIL-STD-810H, Method 516.8 Procedure I, trucks and semi-trailers=40g
  - Non-Operating: MIL-STD-810H, Method 516.8 Procedure V, crash hazard shock test=75g

### Standards/Certifications

- CE approval
- FCC Class A
- UKCA
- E Mark

## Ordering Information

- **VES 31-4S (P/N: 10VE0003100X0)**  
4 x RJ45 10/100/1000 PoE port (802.3af/at), 2 x RJ45 10/100/1000 Ethernet port, 9~36VDC input, ignition detection, low voltage protection, delay timer, E13 Mark
- **VES 31-8S (P/N: 10VE0003101X0)**  
8 x RJ45 10/100/1000 PoE port (802.3af/at), 2 x RJ45 10/100/1000 Ethernet port, 9~36VDC input, ignition detection, low voltage protection, delay timer, E13 Mark