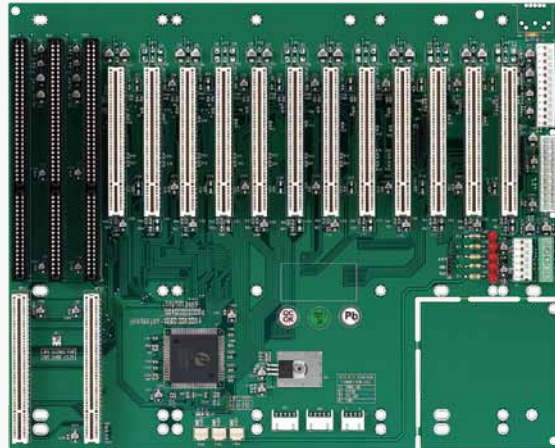


NBP 14P12

PICMG 1.0 15-slot Backplane for 4U Chassis with
2 PICMG1.0 Slot, 1 x ISA/ 12 x PCI



Main Features

- Follows PICMG 1.0 Mount Holes and Compatible with standard 4U Chassis
- Supports 1 x ISA / 12 x PCI
- PCI Compliant with the following Specification
 - Three 5V 32bit PCI slots for full-size boards on the Primary bus.
 - 5V/3.3V 32-bit PCI slots for full-size boards on the secondary bus
 - Supports PCI Local Bus Specification Revision 2.2, Advanced Configuration
- Power Interface(ACPI), PCI Power Management Revision 1.0
- Power Connector Supports
 - 24 PIN ATX Power connector
 - 8 PIN AUX Standard Power connector
 - 6 PIN ATX +3.3V Power connector
 - Support $\pm 12V$, 5V, 3.3V Power Connector
 - Compliance with PICMG 1.0 Full-size SBC

Specifications

System Architecture

- 15-slot backplane

Dimensions

- 317mm (L) x 257mm (W)

Slots

- 3 x PICMG 1.0 (SHB slot)
- 1 x ISA
- 12 x PCI

Power Input/output

- ATX Standard Power connector: BTX24-pin
- Support+12V Standard Power Connector: ATX +12V 4PIN x 2

Environment

- Operating temperature: 0°C to 60°C
- Storage temperature: -20°C to 80°C
- Relative humidity:
 - Operating 10% to 90%, non-condensing
 - Non-operating 5% to 95%, non-condensing

Certifications

- CE approval
- FCC Class A

Ordering Information

- **NBP 14P12 (P/N: 79N0014P01X00) RoHS Compliant**
PICMG 1.0 15-slot backplane for 4U chassis w/ 1 SHB slot,
2 PICMG1.0 Slot, 1 x ISA, 12 x PCI

Dimension Drawing

