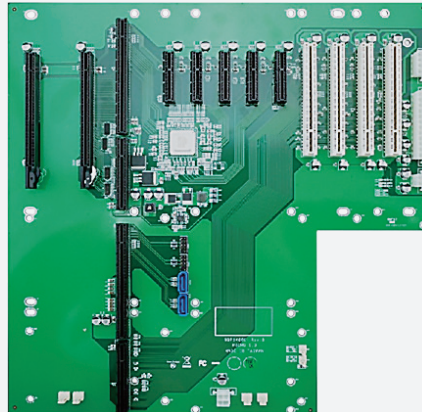


# NBP 14880

14-Slot Backplane for PICMG1.3 CPU Board  
1 x SHB, 2 x PCIe x16, 5 x PCIe x4, 4 x PCI Slots



## Main Features

- Greater powers delivery capability
- System host board and add-on card
- Follows PICMG 1.3 mount holes and compatible with 4U chassis
- Support: 1 x SHB slot, 2 x PCIe x16, physical slot (1 x PCIe x16 or 2 x PCIe x8, by auto detect) 5 x PCIe x4, 4 x PCI slots
- Supports +12V, -12V, -5V, 3.3V power connector
- Compliance with PICMG1.3 SBC

## Product Overview

The NBP 14880 is a 14-slot backplane with 1 x SHB slot, 2 x PCIe x16, 5 x PCIe x4, 4 x PCI slots. The PCIe x16 slot support 1 x PCIe x16 or 2 x PCIe x8 by auto detect, provide flexible expansion options. It follows PICMG 1.3 platform specifications and supports ATX power supply.

## Specifications

### System Architecture

- 14-slot backplane

### Slots

- 1 x SHB slot
- 2 x PCIe x16 (support 1 x PCIe x16 or 2 x PCIe x8)
- 5 x PCIe x4
- 4 x PCI slots

### Power Input

- 24-Pin ATX power connector
- 8-Pin ATX standard power connector support  $\pm 12V$ , 5V, 3.3V power connector

### Dimension

- 317mm (L) x 328mm (W)

### Environment

- Board level operating temperatures: 0°C to 60°C
- Storage temperatures: -20°C to 80°C
- 6-layer PCB to reduce noise and keep lower impedance

### Relative humidity

- 0% to 90% (operating, non-condensing)
- 0% to 95% (non-operating, non-condensing)

### Certifications

- CE approval
- FCC Class A

## Ordering Information

### • NBP 14880 (P/N: 79N0148801X00)

PICMG 1.3 passive backplane for 14 slot chassis, 1 x SHB slot, 2 x PCIe x16 (support 1 x PCIe x16 or 2 x PCIe x8), 5 x PCIe x4, 4 x PCI slots

## Block Diagram

