




Software Defined uCPE for FWA Over 5G Applications

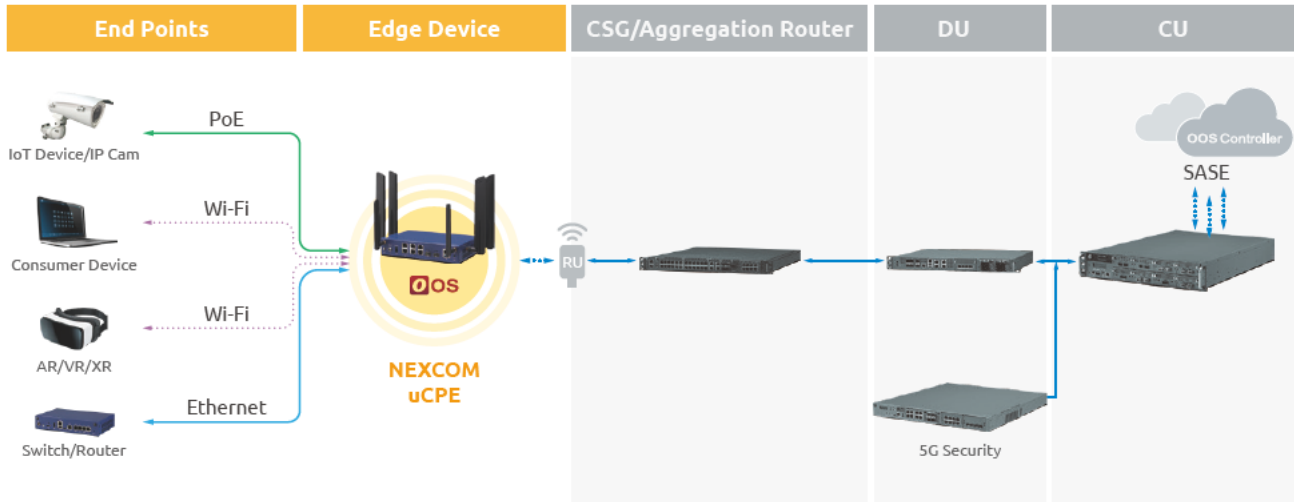
NEXCOM offers versatile cross-platform desktop solutions with a stack of Network OS, tailored for various FWA applications. Users can choose from x86 or RISC-based platforms with different configurations, based on CPU core count, port count, connectivity, and PoE support.

The quick setup process allows users to save time. The application layer supports Docker, QEMU/KVM, Kubernetes, and self-developed apps. Supported applications include loadbalancing, cybersecurity, SD-WAN, network slicing, OTA PoE control, and more.

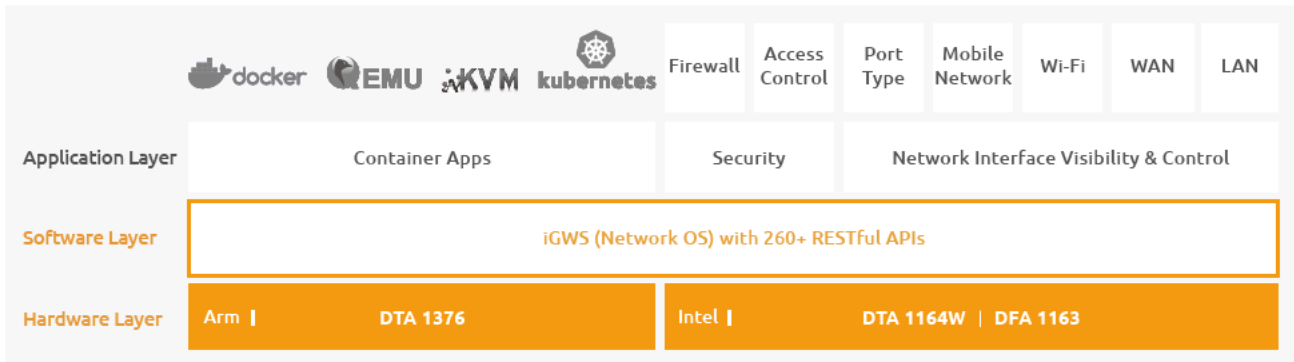
Features

User-defined Container Apps		User-centric Interaction	
 <p>Open-Source Apps</p> <ul style="list-style-type: none"> • Docker/Docker compose • QEMU/KVM • Kubernetes 	 <p>Proprietary Apps</p> <ul style="list-style-type: none"> • Self-developed • Customized • Licensed 	 <p>Intuitive GUI</p> <ul style="list-style-type: none"> • Status monitoring: traceroute, ping, iPerf, speedtest • OTA system upgrade/reboot/power 	 <p>260+ RESTful APIs</p> <ul style="list-style-type: none"> • Device config & control • Network routing • Security: TLS 1.3
Omni Network Connectivity		Cross-platform Hardware Selection	
 <p>Wired</p> <ul style="list-style-type: none"> • 1/2.5/10GbE ports • PoE+ ports (up to 12 ports) • L2 Ethernet switch (8 ports) 	 <p>Wireless</p> <ul style="list-style-type: none"> • Wi-Fi 5/6 • 4G LTE • 5G FR1/FR2 (R15/R16) 	 <p>x86</p> <ul style="list-style-type: none"> • Intel Atom (Formerly: denverton R) • Core count: 4/8 	 <p>RISC</p> <ul style="list-style-type: none"> • NXP Layerscape (Arm-based) • Core count: 1/2/4

System Architecture



Software Building Blocks

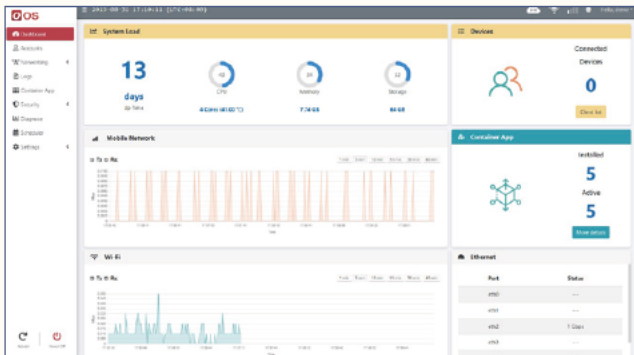


User Scenarios

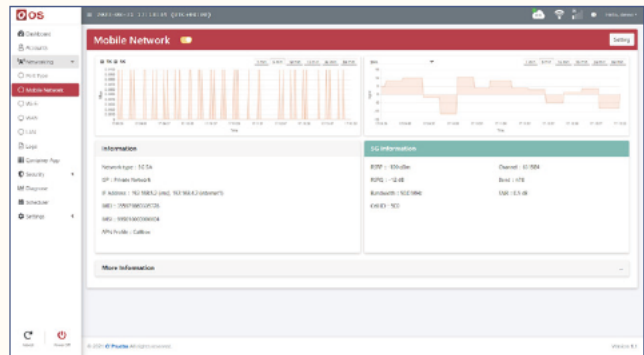


Key UIs of Software Functions

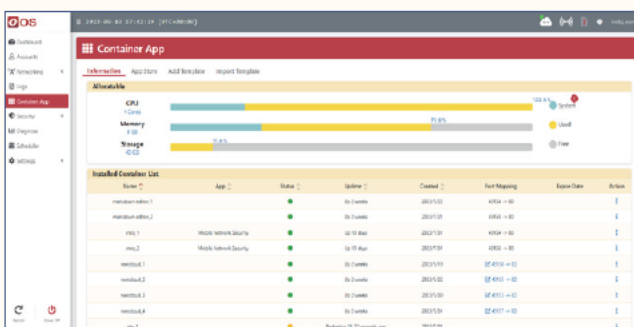
Dashboard



Mobile Network



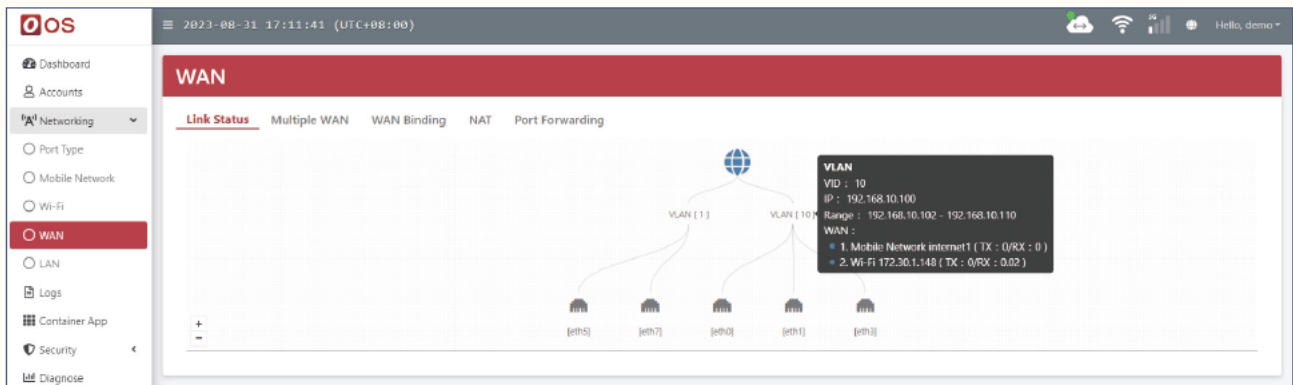
Container App



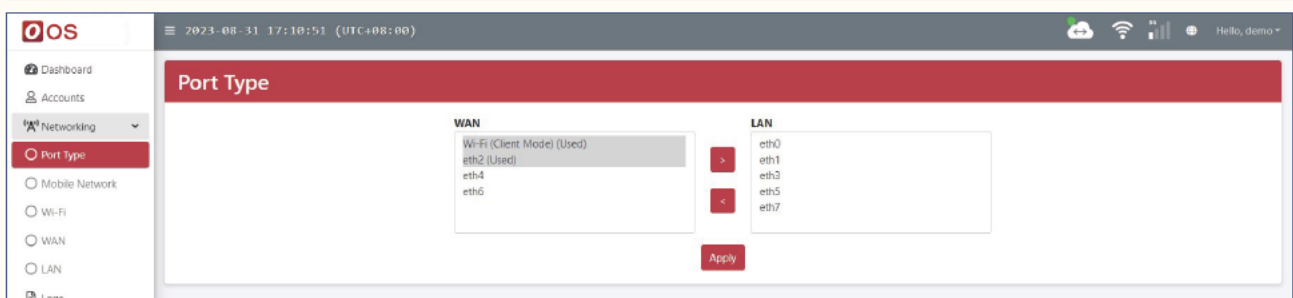
Wi-Fi



WAN Link Status



SD-WAN & SD-LAN



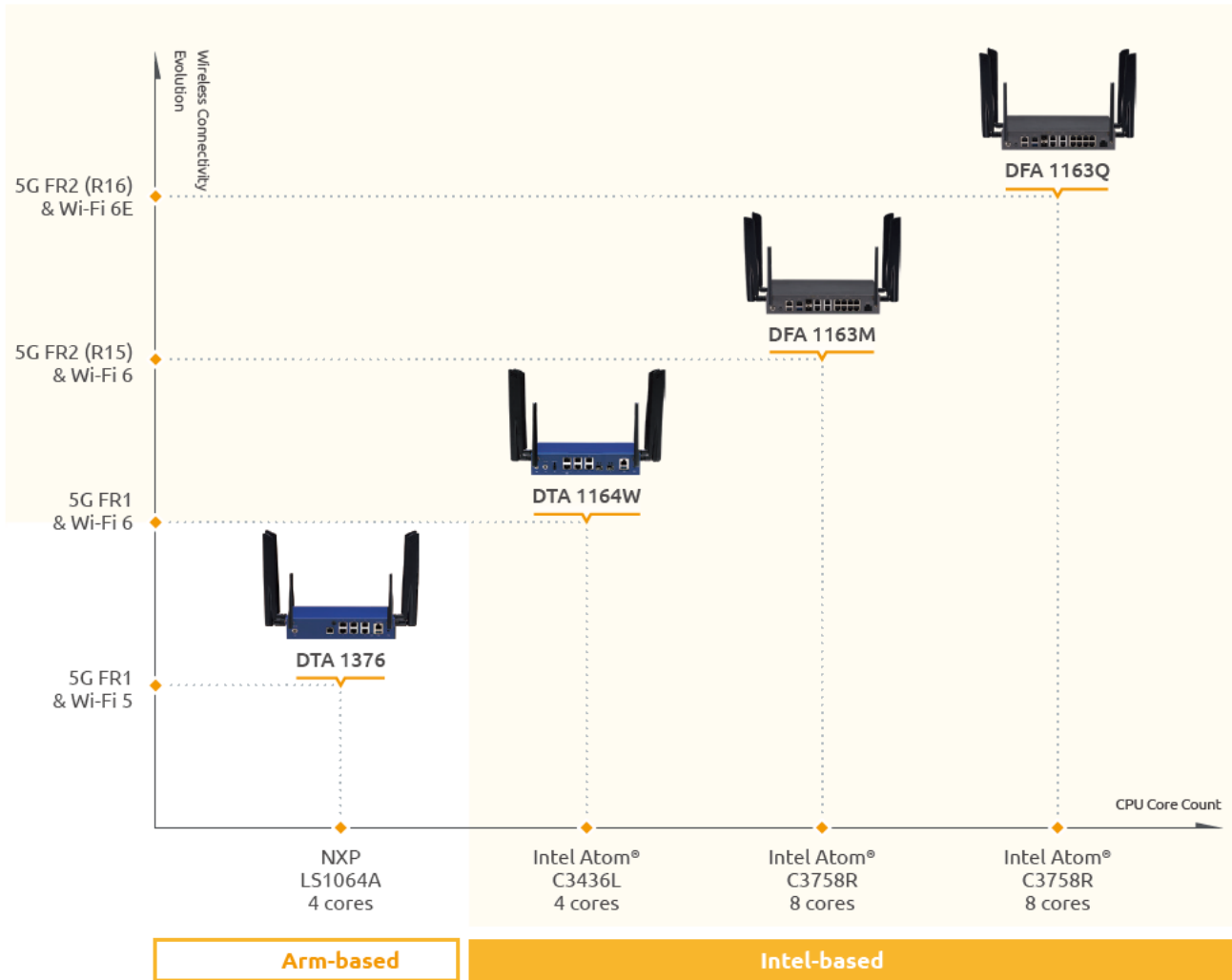
Software Functions

Category	Item	Specification
Mobile Network	Concurrent APN	8
	SIM Binding	Unlimited
	Network Slicing	Ethernet, Wi-Fi SSID and VLAN
Wi-Fi	Encryption	WPA1, WPA2, WPA3
	Mode	AP and Client Modes
	Capacity	13-70
	Multiple SSID	3
	ACL	Blacklist
Multiple WAN	WAN Interfaces	Unlimited
	Failover time	< 2s
	Load Balance	Round Robin
PoE	Control	On/Off
	Information	Current, Voltage and Watt
Firewall	ACL	Unlimited
	Port Forward	Unlimited
	NAT	Unlimited

Hardware Specification

Model	 DTA 1376	 DTA 1164W	 DFA 1163M/DFA 1163Q
CPU	NXP® Layerscape® LS1046A	Intel® Atom® C3000R series, SoC	Intel® Atom® C3000R series, SoC
Cores	4	4	8
Memory	Up to 16GB	Up to 16 GB	Up to 64 GB
Storage	1 x SPI NOR Flash 64MB for U-Boot 1 x M.2 2242 Key M, supports NVMe SSD with PCIe Gen3 x2	1 x M.2 2242 SATA Key M	2 x DDR4 2400 ECC RDIMM/UDIMM, up to 64GB
LAN Ports	7 x 1GbE RJ45	6 x 1GbE RJ45 & 2 x 1GbE SFP	2 x 2.5GbE RJ45 2 x 1GbE RJ45 8 x 1GbE RJ45 Switch 1 x 1GbE SFP 1 x 10GbE SFP+
Wireless	1 x mini-PCIe for Wi-Fi 5 module 1 x M.2 3042/3052 for 4G LTE/5G FR1 module	mini-PCIe slot for Wi-Fi 5/6 module M.2 3042/3052 for 4G LTE/5G (FR1) module	1 x mini-PCIe slot for Wi-Fi 6 module 1 x M.2 3042/3052 for 4G LTE/5G (FR1/FR2) module
PoE	PD mode	2 x 1GbE RJ45 ports	2 x 2.5GbE RJ45 ports 2 x 1GbE RJ45 ports 8 x 1GbE RJ45 switch ports
Power	40W 12V AC power adapter	65W 12V AC power adapter 72W 54V PoE power adapter (optional)	90W 12V AC power adapter 310W 54V PoE power adapter (optional)

Offering Portfolio



Ordering Information

- **DTA 1376 (P/N: 10TA0137600X0)**
NXP Layerscape LS1064A processor, 4 Cortex-A72 cores, 7 x 1GbE RJ45 ports
- **DTA 1164W (P/N: 10TA0116408X0)**
Intel Atom C3436L processor, 4 cores, 6 x 1GbE RJ45+2 x SFP ports
- **DFA 1163M (P/N: 10FA0116302X0)**
Intel Atom processor C3758R, 8 cores, w/ 5G R15 (FR1 and FR2) support
- **DFA 1163Q (P/N: 10FA0116303X0)**
Intel Atom processor C3758R, 8 cores, w/ 5G R16 (FR1 and FR2) support

To get a free network OS trial and confirm your wireless configuration, please reach out to your assigned NEXCOM account manager or submit a request via our website and we will contact you shortly.

Place Inquiry

