



Cyber Security

Username

Remember me [Forget password](#)

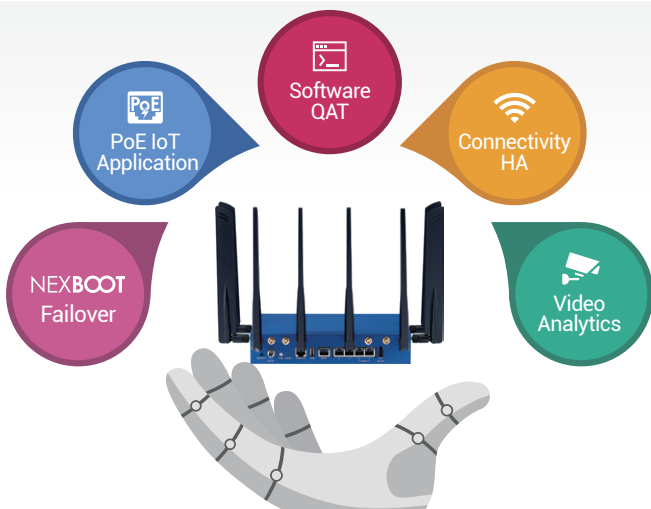


AI-IN-A-BOX DESKTOP APPLIANCE FOR CYBER SECURITY & EDGE APPLICATIONS

Exceptional Connectivity, Performance, and High Availability

Compact yet powerful, the DNA 140 desktop leverages Intel Atom® x7000RE Series processors, offering exceptional connectivity, performance, and high availability. Powered by Intel® technologies, it provides a solid foundation for AI-driven applications, fast and secure data transfer, and efficient edge computing.

Designed for demanding cybersecurity tasks, the DNA 140 excels in visual data processing, real-time monitoring, and object detection. Its latest NEXBOOT function ensures uninterrupted service, reduces maintenance efforts, and prevents downtime, enhancing network stability in dynamic environments.



DNA 140

AI-in-a-Box Desktop Appliance

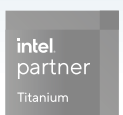
- Intel Atom® x7000RE/E/C processor
- 1 x SO-DIMM slot for DDR5, 4800 MT/s, ECC/non-ECC, up to 16 GB
- eMMC 32GB onboard
- 4 x 2.5GbE RJ45 ports
- 2 x PoE+ ports, supports up to 30W (802.3at) (optional)
- 1 x 1GbE management port
- 2 x M.2 3042/3052 for LTE/5G FR1 modules
- 1 x mini-PCIe for AI card or Wi-Fi module
- 1 x M.2 2242 SATA SSD
- TPM 2.0 onboard



NEXCOM International

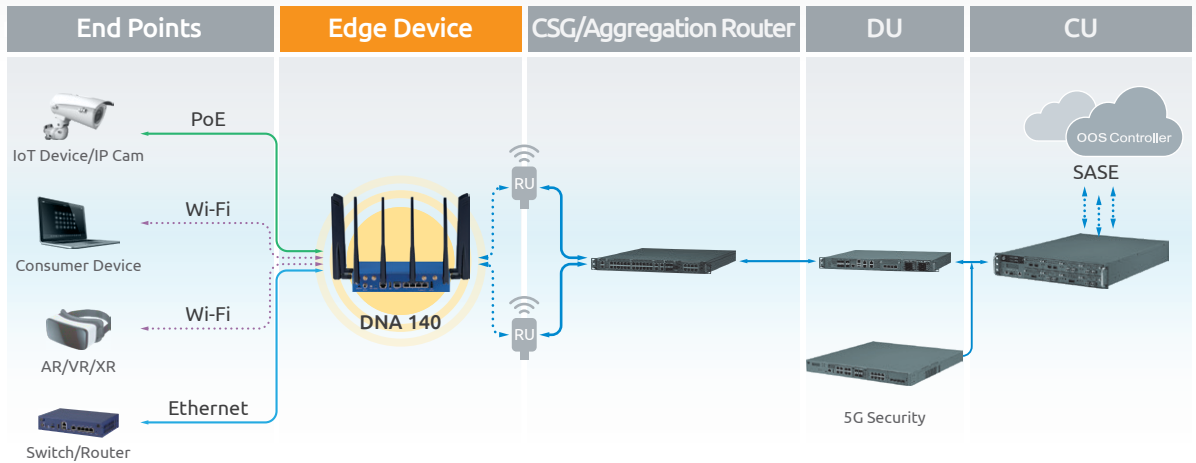
9F, No.920, Zhongzheng Rd., Zhonghe District,
New Taipei City, 23586, Taiwan, R.O.C..
www.nexcom.com

For more info., please contact:
NCS_Marketing@nexcom.com.tw

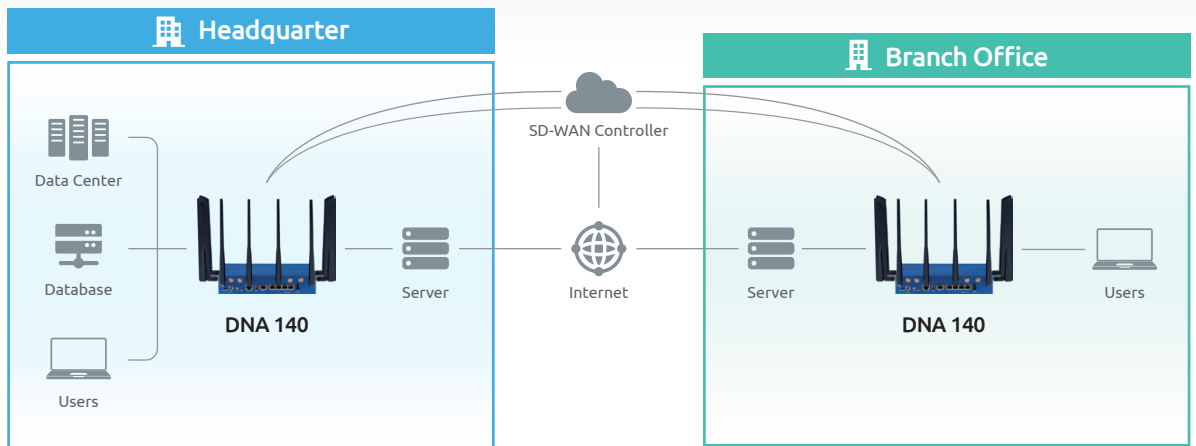




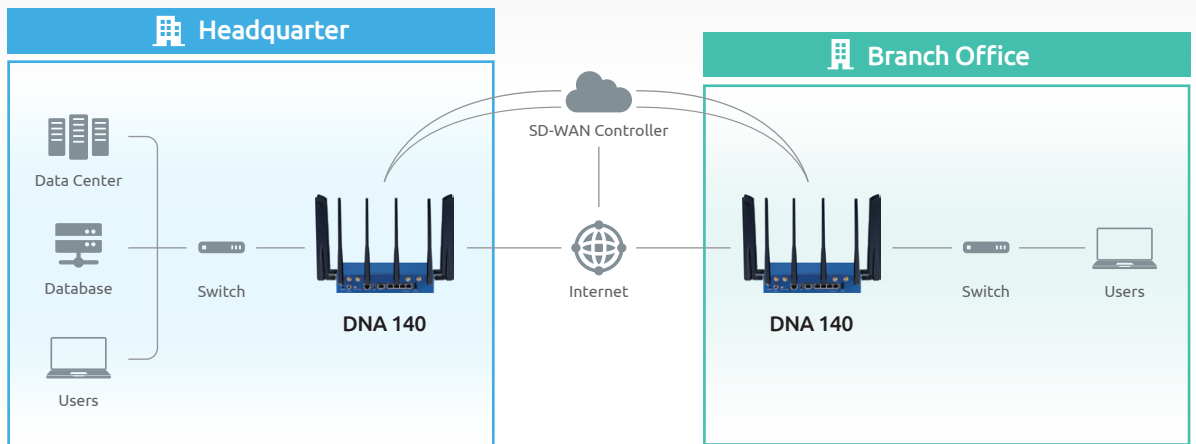
FWA uCPE



SD-WAN Router



Security Gateway



NEXCOM International

9F, No.920, Zhongzheng Rd., Zhonghe District,
New Taipei City, 23586, Taiwan, R.O.C..
www.nexcom.com

For more info., please contact:
NCS_Marketing@nexcom.com.tw

