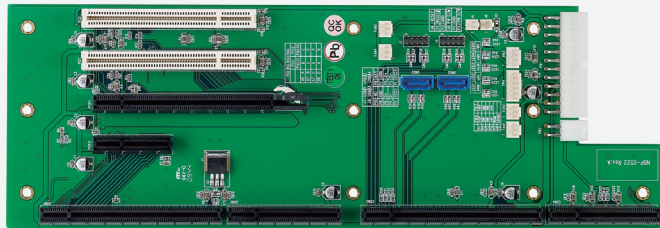
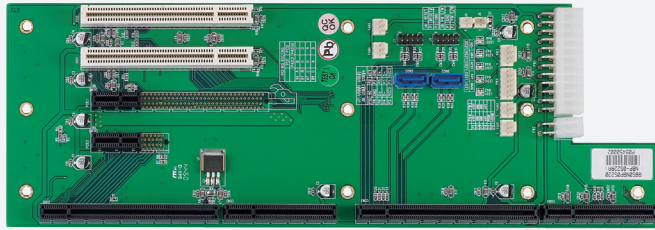


# NBP 0522

PCIMG 1.3 w/ SBC Slot, 1 x PCIe x16, 1 PCIe x4, and 2 x PCI slot



## Main Features

- Designed for PEAK 870 and PEAK 872
- Support 1 PCIe x16/1 PCIe x4/1 and 1 x full-sized PCI add-on card
- Compatible with PCIMG 1.3 board

## Specifications

### System Architecture

- For 5-slot chassis

### Dimensions

- 317.5mm (W) x 110.7mm (L)

### Slots

- PICMG 1.3 (SBC slot)
- 1 x PCIe x16 (default as PCIe x1)
- 1 x PCIe x4 (default as PCIe x1)
- 2 x PCI 32-bit/33MHz

### Power Input

- 1 x 24-pin power connector

### Environment

- Operating temperature: 0°C to 60°C
- Storage temperature: -20°C to 80°C
- Relative humidity:
  - Operating 10% to 90%, non-condensing
  - Non-operating 5% to 95%, non-condensing

### Certifications

- CE approval
- FCC Class A

## Ordering Information

- **NBP 0522 (P/N: 79N0052200X00)**  
PCIMG 1.3 w/ SBC slot, 1 x PCIe x1, 1 PCIe x1, and 2 x PCI slot

## Dimension Drawing

