



NEXCOM USA

Services Center

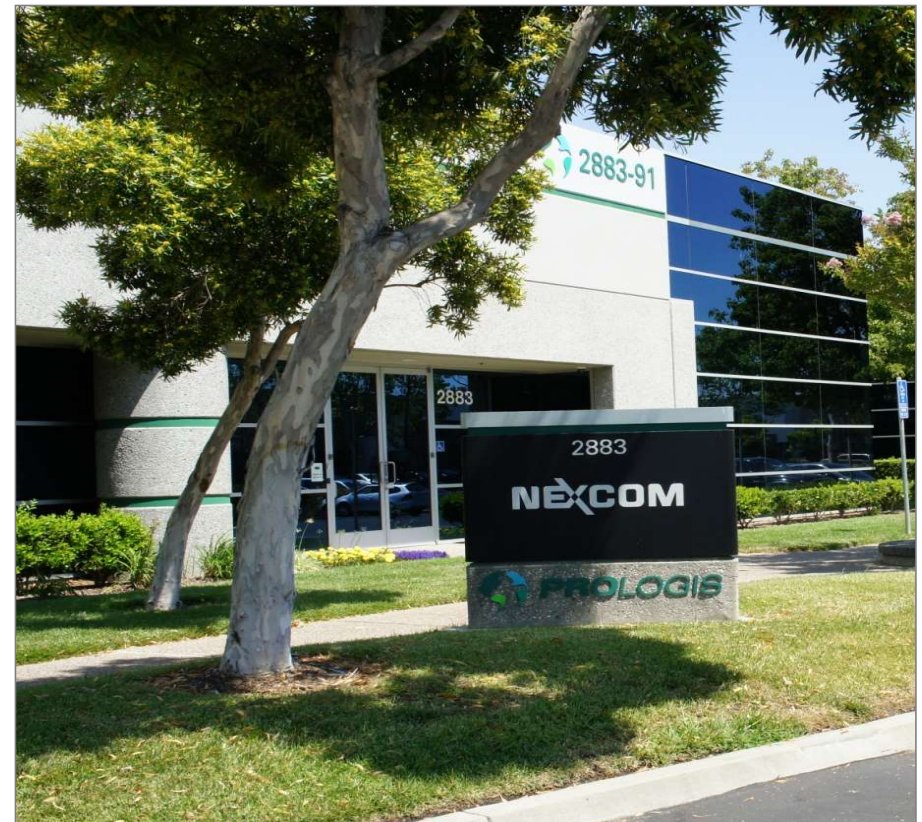
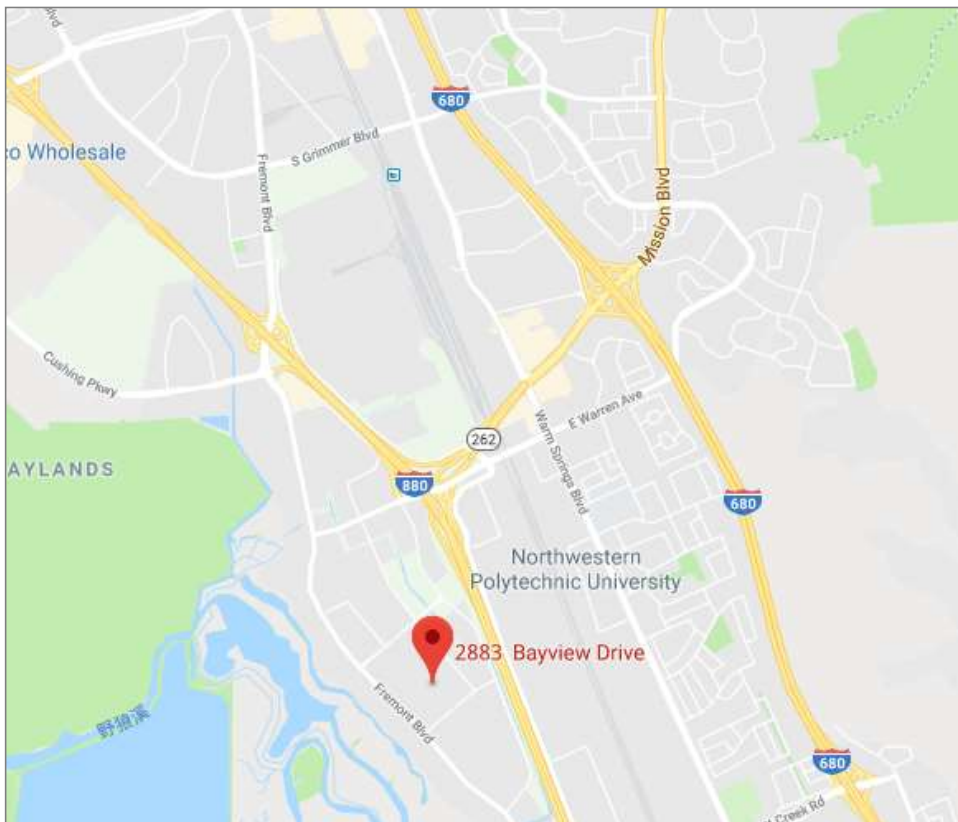
Oct., 2019

Committed to Customer Success

Where we are



2883 Bayview Drive, Fremont, CA 94538



Customer Focus Team

Best CFT Team for You



Your One Stop Services Partner



Manufacturing Service

- *BTO / BTS /CTO Manufacturing*
- *Assembly Integration - Assembled in USA*
- *Image Loading and Activation*
- *Life Cycle Management*
- *NPI Implementation*
- *ODM / OEM Process*
- *OQC / Quality Inspection and Testing*

After Sales Service

- *Local Repair & Refurbish*
- *ECN / Rework / Debug*
- *White Glove Onsite Support*
- *Advance Replacement*

Logistic Service

- *Inventory Management*
- *Global Order fulfillment*
- *Kanban (Pooling) Logistic Process*
- *End to End Customer Services*
- *Resourcing and Kitting Services*

Quality Assurance



Consistent Quality

- *Develop mutual understanding on quality control and strive for excellence*

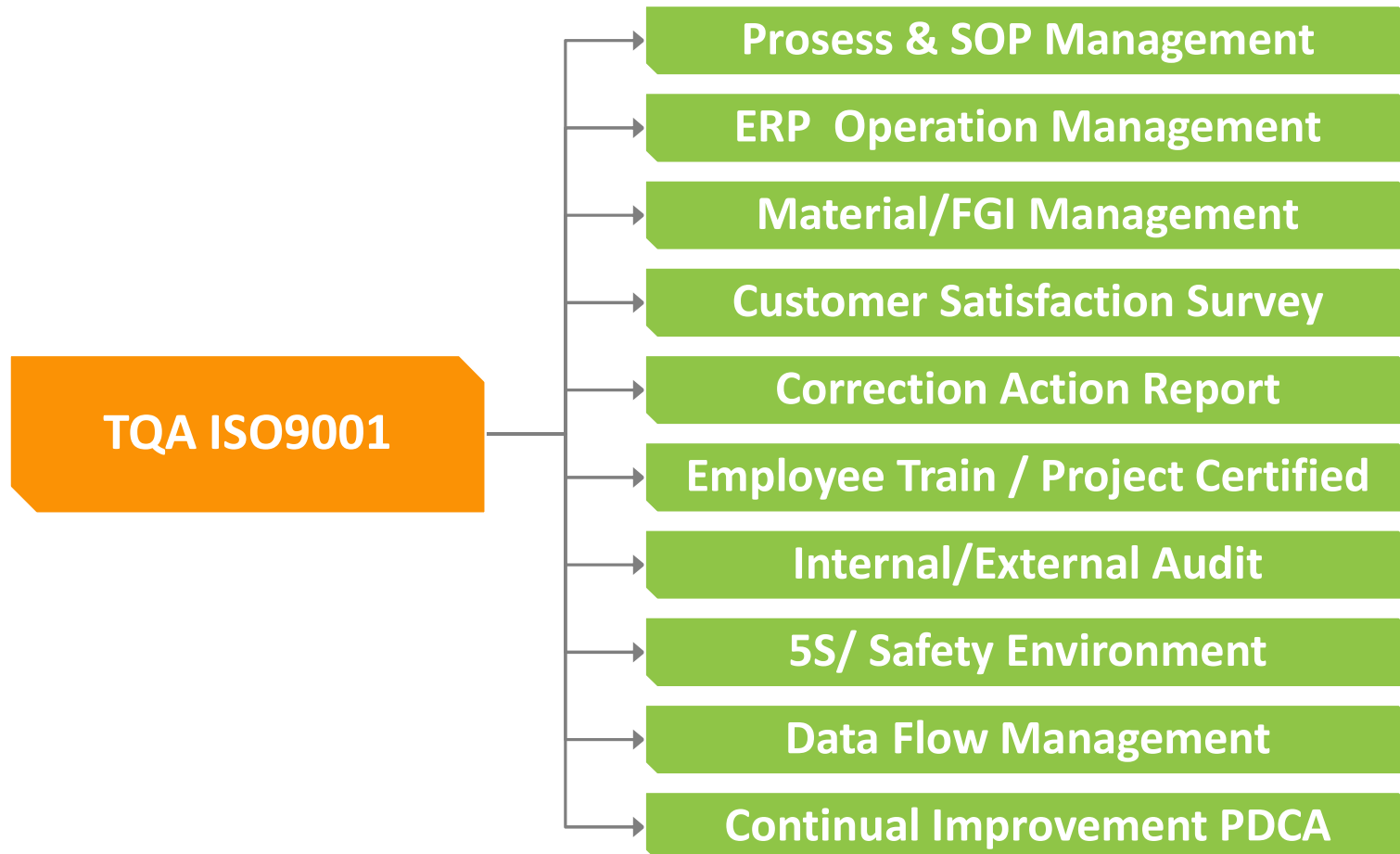
Total Quality Assurance

- *Regulate all workflow and checkpoints on industrial standards*

Continuous Improvement

- *Strive to be impeccable for total customer satisfaction*



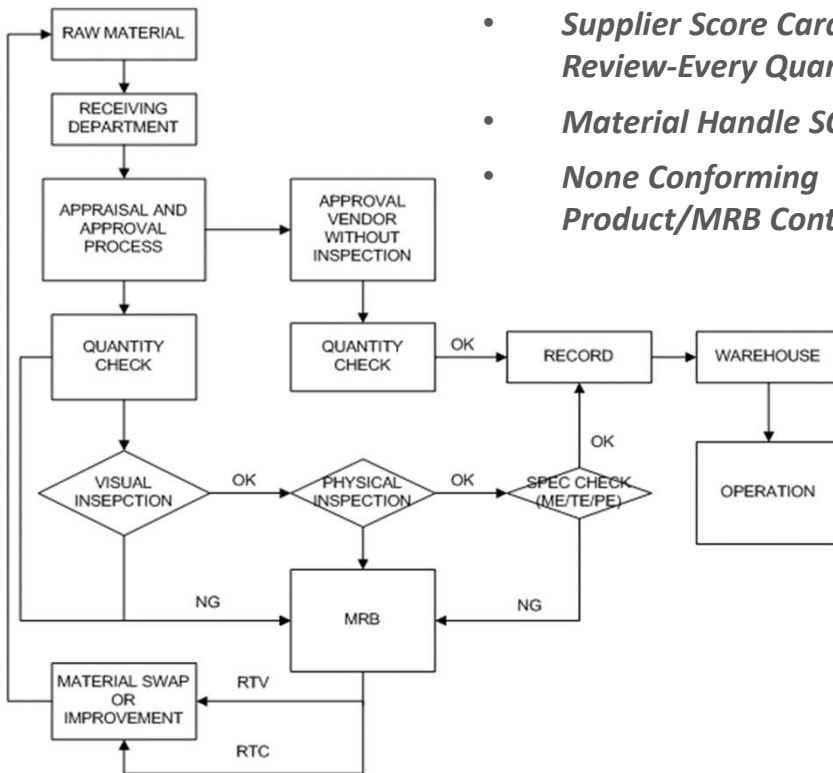


Quality Control - IQC-IPQC-FQC



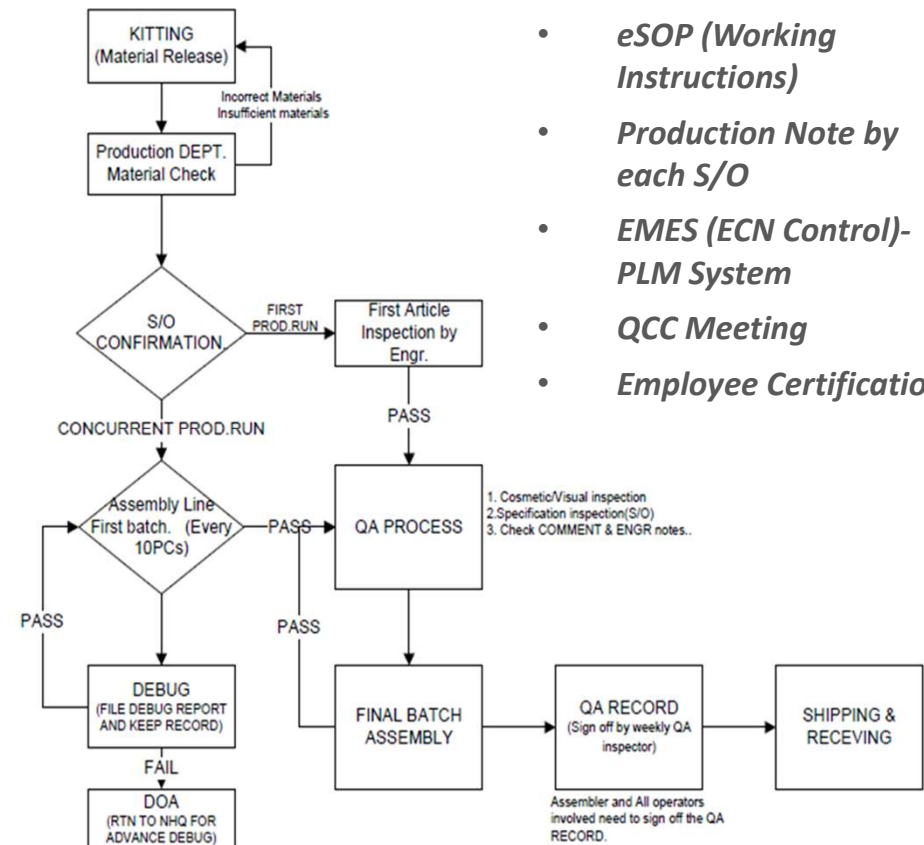
IQC-Fremont

- ERP Management (Tiptop)
- QVL refer to Taiwan's QVL list
- Supplier Score Card Review-Every Quarter
- Material Handle SOP
- None Conforming Product/MRB Control



IPQC/FQC-Fremont

- eSOP (Working Instructions)
- Production Note by each S/O
- EMES (ECN Control)-PLM System
- QCC Meeting
- Employee Certification



Facility Capacity

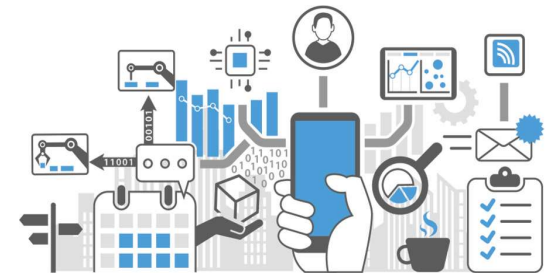
Production Capacities	Shifts (Daily)	Hours (Daily)	PCs/Sets (Month)	Facilities
Box Build Assembly / Test	1	8	1,800	4 Assembly Lines
Final Configuration Activation / ECN / Refurbishment	1	8	3,000	10 of Final Configuration Stations

Equipment List

Prototype / FAE Testing Lab X 1	Customizable Labeling Machines X 8
Walk in Burn-In Rooms X 2	Debug / PCB Rework Station X 5
ESS Thermal Cycle Chamber X 1	Soldering Hot Pot X 1
Hi-Pot Test Station X 1	Image(SW) duplicate station X 4
Prototype Mechanic Shop X 1	Torque Calibration Station X 1
ESD Controlled Shopfloor (10,000 SF)	24 X 7 monitored warehouse (21,000 SF)

High Mix Low Volume System Integration Solution

- *Assembly and Box Build with Chassis (1U to 4U) and value-added Component*
- *Functional Test, Simulation Test, Final Configuration Activation*
- *Software Installation – with different storage media/methods*
- *OS Installation – Windows, Linux and Android*
- *Burn In Test – Walk In Chamber 35-50 C up to 100 units*
- *Hi-Pot Test follow UL and CQC Standard*
- *ESS Chamber Testing with -40 to 85 C Hourly Range*
- *New Product Introduction (NPI) Development*
- *ODM/OEM Service Development*



Production Operation



Schedule S/O Production



Material Kit Release



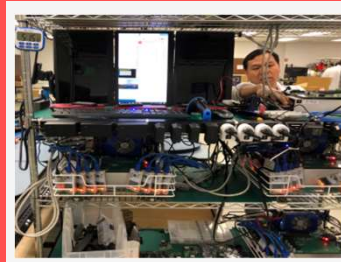
Box Build/Assembly



SW Installation



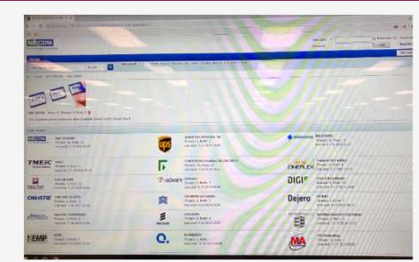
Final Testing



Label & Packout



QA with Shop Floor Data



Production Floor

Assembly Lines



Daily QCC meeting

- *Effective Training*
- *Employee Awareness*



Production Floor

Workmanship Standard

- *SOP with Working Discipline*
- *Regulate all Workflow and Checkpoints on Professional Standard*



Burn In Room and ESS Chamber

ESS Thermal Cycle Chamber

- *Temperature: - 40 °C – 85 °C*
- *Drop Rate: 2- 10C/Min*



Burn In Chamber

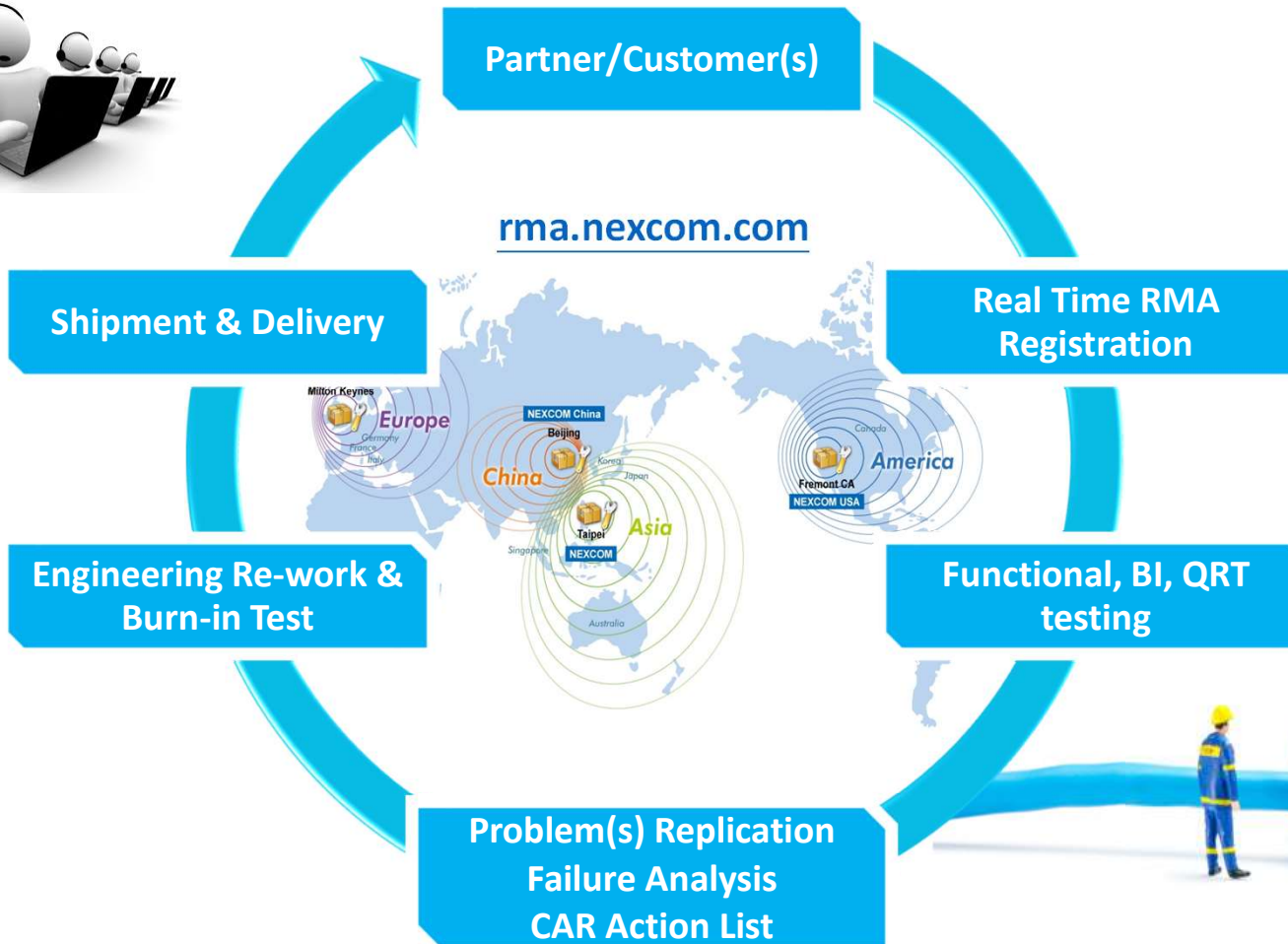
- *Temperature rang: 35 °C- 55 °C*
- *Two Rooms for total 100 units/Cycle*



High Mix Low Volume System Integration Solution

- *RMA Turn Around Time - in 10 Working days*
- *Failure Analysis and Correction- Closing and FAE Report by FAE / QA*
- *Shipping / Receiving Record - Tracking Number and Follow up*
- *Management Report --Weekly and Monthly Review*
- *FQA process --Functional / Simulation Test with Final Burn In Test*
- *Quality Reliability Testing (ORT) – Remote with Customer Site*
- *DOA process -- 3 Working days Action*
- *Repairing and Refurbishment - Workmanship IPC 610 and Rework/ECN SOP*
- *Onsite Field Services- Advance Replacement, White Glove, ARMS Portal, North America Coverage*

RMA real time on line tracking system



Home > Support > RMA/DOA Online Services

Support

- Downloads
- Technical Supports
- MA/DOA Online Services
- EXCOM Express
- Online Catalog

Login

Account :

Password :



FAE Testing Lab



Pre-sale and After Sale

- *Verification and Issue-solving*

Logistic Service

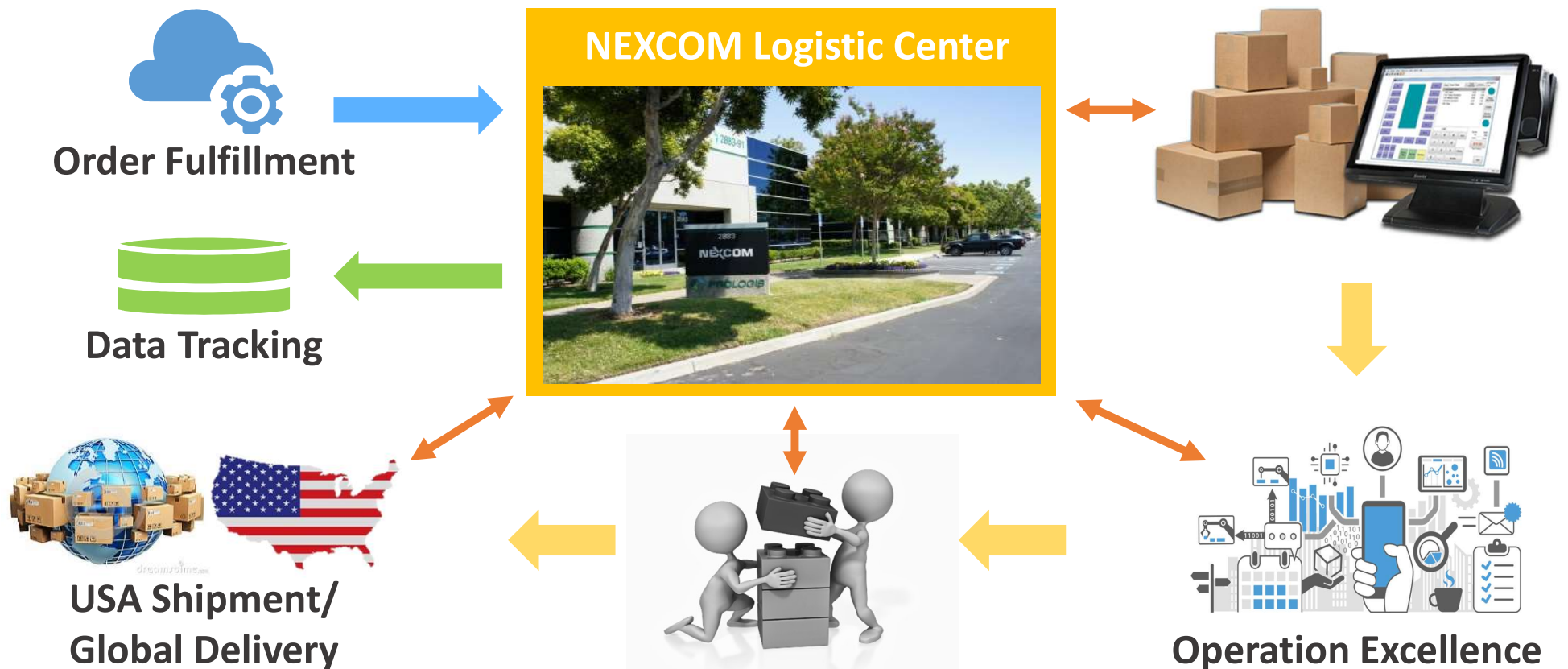
- *Global Delivery Through FedEx/UPS/DHL, Forwarders*
- *Stock Rotation Logistics Services*
- *Reverse logistics --- ECO, Upgrade, RMA*
- *24x7 Security Guard & Surveillance System*
- *B2B / EDI Global Logistic Service*
- *ERP Data Management*
- *On-line Transactional Capability*
- *Kanban Kitting Services*
- *Resourcing Services*
- *Advance Replacement Service*
- *White Glove Level Service*



Logistic Services Flow



Inventory Management Process

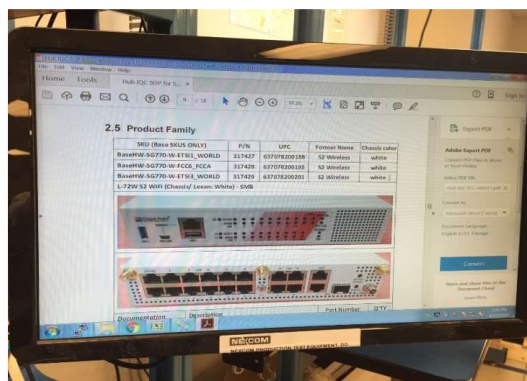


Global Fulfillment Services



- | | | | | | | | | | | |
|---|---|---|---|---|--|---|---|---|---|---|
|  |  |  |  |  |  |  |  |  |  |  |
| 1
NEXCOM H.Q.
EMBUX/GreenBase/
NexAloT/NexCOBOT
Taipei, Taiwan | 2
NexAloT
Central Taiwan Office
Taichung | 3
NEXCOM UK
Milton Keynes | 4
NEXCOM USA
NexCOBOT USA
Fremont, CA | 5
NEXCOM China
NEXSEC Incorporated
Beijing | 6
NEXCOM China
Shanghai/
United System Service
Shanghai | 7
NEXCOM China
Surveillance Technology
Shenzhen | 8
NexCOBOT China
Guangzhou | 9
NEXCOM China
NEXGOL China
Chongqing | 10
NEXCOM China
NEXGemo Technology
Beijing | 11
NEXCOM Japan
Tokyo |

Order Processing



Project Certification



Customer Audit





Thank You



Committed to Customer Success